

Cool-Tech Refrigerant Recovery/Recycling Unit**Model 34788**

It recovers, recycles, evacuates, leak tests, and recharges R-134a quickly and accurately. Fully automatic function lets you recover, vacuum, leak test, charge, and then walk away!

Other features and functions:

- Vacuum Leak Test
- Automatic Refrigerant Refill, Air Purge and Oil Drain
- Refrigerant Management
- Vacuum Function
- Meets SAE J-2788 Standards.

Cool-Tech Refrigerant Recovery/Recycling Unit**Model 34288**

It recovers, recycles, evacuates, leak tests, and recharges R-134A quickly and accurately. 95% refrigerant recovery and charging to +/- 1/2 oz.

Other features and functions:

- Automatic Air Purge
- Refrigerant Charging
- Refrigerant Management
- Vacuum Function
- Meets SAE J-2788 standards.

Refrigerant Recovery/Recycling Unit for Multiple Refrigerants**Model 17800B**

Ideal for trucks and heavy-duty applications

- Recovers, recycles, evacuates, and recharges R-12, R-134a, R-22, R-502 MP and HP blends, and many more
- Lockout panel prevents mixing of refrigerants
- Comes with two 50-pound tanks.



34788



17800B



34288



Digital A/C Refrigerant Handling System Model RHS[®]980

The ArcticPRO™ RHS[®]980 fully complies with the new SAE J2788 standard.

- Logical functionality - Fully automatic sequence programmability
- Advanced serviceability - Unobstructed internal machine access
- Includes TechALERT[®], with Base and
- Universal Remote (495-80000-00)
- RHS[®]980 Refrigerant Database (360-82110-00)
- 5 Year Warranty...5 yrs parts/2 yrs labor (035-81394-00); ArcticPRO™ Service Shop Display Banner (035-81393-00).

Specifications

Model	RHS [®] 980
Scale Accuracy	J2788
Compliant Recovery Accuracy	J2788
Compliant Hoses	9 ft (2.74 m)
Compressor	3/8HP – 0.8KW, pressure protected, balanced start-up, oiled, hermetically sealed
Cooling Fan	Industrial-duty
Vacuum Pump	7 CFM, dual stage, 29.9 In Hg (0.40 mbar)
Operating Temperature Range	32°F TO 122°F
Charging Cylinder	Spin-on type
Weight	30 lb (13.6 kg) DOT



Refrigerant Recovery / Recycling / Recharging Unit Model AR2788

Modular toolbox design for the professional shop environment, fully compliant with SAE J2788 standard.

- Three integrated drawers for convenient storage of A/C service tools and spare filters
- Easy-to-follow operating and initial setup instructions provided on large LCD screen
- Powerful 1 HP oil-less Cyclone™ compressor provides up to 50% faster recovery cycle rates and ensures compatibility with all hybrid oils
- Exclusive patent pending plumbing arrangement eliminates the use of all solenoid and check valves, both prone to failure when exposed to foreign contaminants such as aftermarket A/C sealants
- Patent pending flow control technology for faster and more accurate recovery, recycling, and recharging
- Battery back-up and software to ensure proper unit shut down in the event of a power failure
- Advanced self diagnostic software actively monitors all mechanical and electronic functions
- High performance 6 CFM 2 stage vacuum pump ensures deep, fast evacuation.

Oil-Less Recovery/Recycling Unit

Model AR500

Light weight portable recovery/recycling unit with recycling, perfect for small shops, agriculture, off road, tractor, and mobile service. Includes hoses and coupler, and comes with or without tank.

Specifications

Compressor Type	1/3 HP reciprocating oil-less
Recovery Rate	0.75 lbs. per minute vapor/1 lb. liquid
Refrigerant Clearing	3 manual self clearing valve
Operation	Single pass recycling
Evacuation Rating*	28" hg
Operating Temperature Range	32°F TO 132°F
Weight	24 lbs.
Warranty	1 year parts and labor



AR500

Oil-Less Refrigerant Recovery Machine

Model CR700

Compact modular design with easy access 4-bolt latching system – complete compressor rebuilt in minutes!

- Powerful 1HP oil-less reciprocating recovery compressor
- Exceptional compressor, condensing & cooling systems allow fast recovery in high temperature environments
- Automatic Low Pressure shut-off feature turns unit off when recovery is completed
- R-410A ready with 550psi high pressure shut-off switch
- Built-in suction filter located under suction port.

Specifications

Model	CR700	CR700E	CR700S
Voltage	115V	230V	230V
Gauges	psi/kgcm ²	BAR/kPa	psi/kgcm ²



CR700

Refrigerant Identifier

Model RI-2004DXP

The Neutronics RI-2004DXP Refrigerant Identifier is the premier product for testing the type and purity of refrigerant in Mobile AC systems. It is faster and smaller, yet provides the durability and accuracy users have come to expect from Neutronics Automotive. In addition, the RI-2004DXP features “Blend-ID” to indicate the presence of EPA “SNAP” approved blend refrigerants.

Powered by 12Vdc or the *optional rechargeable battery* for ultimate portability, and the instrument is supplied complete with R12 and R134a sample hoses, an R134a adapter fitting to permit sampling of ACME ported cylinders, 12Vdc battery clips and a *factory installed printer module*.



RI-2004DXP



16009

DiscovR 134a Refrigerant Identifier Model 16009

The best defence against unknown refrigerant and the risks associated with unknown refrigerant is a refrigerant identifier.

- Protects your A/C service equipment
- Guards against costly recovery equipment repairs. The average repair cost is \$300, and in many cases contaminated refrigerant will void the product's warranty
- Uncovers hard to find air contamination. DiscovR refrigerant identifier notifies you when the system contains excessive air
- Fast and Accurate. 'Pass' and 'Fail' lights clearly show if refrigerant is pure enough to be recovered.



16910

Refrigerant Identifier Plus Model 16910

- Displays the actual percent of R-12, R-134a, R-22, and air in the system or tank.
- Air purge
- Visual and audible hydrocarbon alarm
- On-board printer port.



ID1000

Refrigerant Identifier Model ID1000

The ID1000 identifies percentages of R12, R134a, and HCFC's like R22, Hydrocarbons like propane and butane, and air. It uses Neutronics' leading infrared identification technology. A special printer port allows you to supply your customers with a printed record of their A/C system's contents.

- 98% accuracy
- Self-calibrating system.

A/C System Flusher

Model 17580

Flushes lines, evaporators and condensers.

Closed Loop — Circulates solvent continuously through components (adapters are needed)

- Pulsing Action — Loosens dirt, corrosion and other debris; by switching the hoses, you can also back flush
- Air Agitation Needle Valve — Bubbles air into liquid stream to enhance cleaning action
- Hose Adapters — Contains adapters to mate with 1/4" flare and 3/8" quick disconnect fitting kits
- Sight Glass — Tank level sight glass for easy filling
- Activated charcoal filter limits odours.



A/C System Flush

Model ACT3000

Specifically designed for the modern A/C repair specialist!

- Cleans A/C system components by removing debris and dirt
- A critical process after catastrophic failures
- Closed-loop design for circulating flush fluid and filtering contaminants
- Universal adapter kit included.

Specifications

Model	ACT3000
Pump	Air Pump 1 GPM (3.79 liters per minute)
Process Time	45 Minutes average (flush + purge)
Shop Air	Internally Regulated to 55 PSI
Service Requirements	1 Gallon
Fluid Types	RTI & other recognized AC Flush solvents
Hoses	(2) Clear PVC 10ft.
Adapter Set	High Flow Couplers for maximum flushing power





16455

Electronic Leak Detector

Model 16600

- For all CFC, HCFC, and HFC refrigerants
- Uses corona discharge technology
- Audible and visual leak indicators.

TruTrack™ Ultrasonic Leak Detector

Model 16455

- Detects Refrigeration leaks, pressurized gas leaks, vacuum leaks, dry nitrogen gas leaks, steam leaks, etc. It will detect any gas under pressure or vacuum
- Adjustable sensitivity
- Audible and visual leak indication.

TruTrack™ Ultrasonic Sound Generator

Model 16451

An ideal accessory for Robinair's Model 16455 Ultrasonic Leak Detector, the sound generator detects seal failure in refrigerators, microwaves, vehicle passenger compartments, trunks, and any other location where there should be a good seal. Battery-operated unit emits special frequency from inside the test area; where the sound can be heard, a leak exists.



16451



16600

THE ELIMINATOR™ Electronic Refrigerant Leak Detector

Model LS3000

Fully automatic electronic refrigerant leak detector for all HFC, HCFC, CFC, SF6 gasses & blends. Two separate visual LED displays enables user to pinpoint the exact location of leak source & the approximate size of that leak.

Specifications

Model	LS3000
Sensor Type	Cold Cathode Diode: Patented design allows fast, accurate detection of refrigerant leaks maintaining maximum sensitivity throughout the life of the sensor. Highly resistant to background contaminants including heavy condensation, oils, leak solutions, brake oils, radiator coolants, washer fluids, etc.
Sensitivity	Fully automatic selection allowing detection of a 0.25oz/yr (7g/yr) leak rate of HFC.
Leak Indication	Audible Alarms: Two user-selectable audible alarm option (HIGH and LOW intensity)
Tachometer Visual Display	Tachometer-like bar graph display: Eight high intensity LEDs
Gearshift Visual Display	Arranged in a gearshift pattern, 7 LEDs indicate the current sensitivity range of the unit and subsequent leak size
Flex Probe	14"/35.5cm long, 0.25"/6.4mm diameter
Power	Auto OFF after 10 minutes of inactivity.



LS3000

LEAK SEEKER® Electronic Refrigerant Leak Detector

Model LS790B

Combines the most advanced microcomputer circuitry with field proven Ion-pump sensor technology creating a highly sensitive, accurate electronic refrigerant leak detector. Over 100 computer generated tones and a high intensity bar graph display quickly alerts the user to varying halogen concentrations. Patented automatic calibration design eliminates the need for manual balance or tick rate adjustments while the user selectable 10 sensitivity ranges enables the LS790B to detect leaks of all refrigerants.

Specifications

Model	LS790B
Sensor Type	Patented Ion-Pump sensor with built-in selective filter housing
Sensitivity	0.25oz/yr (7g/yr) leak rate of HFC.
Audible Alarms	Over 100 computer generated tones varying in intensity with leak size
Visual Display	10 high intensity bar graph display
Lock-Out Mode	Unique feature enables quick & easy locating of refrigerant leaks in highly contaminated search zones. In this mode, the unit will automatically & systematically store the recorded concentration levels of background refrigerant while initiating leak search, alarming only in the area of the highest recorded concentration level, the actual leak source.
Flex Probe	18"/45 cm long metal cable probe
Operating Temp	0 to 140°F / -18 to 60°C
Power	Auto OFF after 15 minutes of inactivity.



LS790B



34990

Automatic Charging Scale

Model 34990

- Highly accurate
- Tare Function– Zeroes the display to easily read changes in the weight.

Slimline Refrigerant Scale

Model TIF9010A

This high resolution scale has charging and recovery capabilities and can be used with all refrigerants.

- Three display modes - lbs./oz.; decimal lbs., kilograms
- Auto zero
- Removable control box with prop stand/hanging hook
- Range 0 oz. /or 0 lbs. to 110.000 lbs. /or 0kg to 50.000 kg
- Built into carrying case.



TIF9010A

Specifications

Model	34990	TIF9010A
Capacity	110 lb / 50 kg	110 lb / 50 kg
Accuracy	000.5% of reading	000.5% of reading
Resolution	±1/4 oz	0.1 oz/0.005 lbs / 2 g
Weight	8 lbs	4.5 lbs
Power	110 V	9V DC (battery life: 20 hrs)
Readout	Imperial / Metric	Imperial / Metric
Operating Temperature	50°F - 120°F / 10°C to 49°C	32°F - 120°F / 0°C to 49°C



Compact High Capacity Charging Scale

Model CC220

High capacity 220lb/100kg Compute-A-Charge refrigerant charging/ recovery scale, calibrated to strict NIST standards. Fully enclosed and removable metal scale platform enables use of product in or out of the protective case. Large, highly visible high resolution LCD readout displays either Imperial or Metric measurements in .25oz / 10g increments. Full mechanical and visual overload protection.

CERTIFIED - Calibrated to standards traceable to the National Institute of Standards and Technology (N.I.S.T.)

Specifications

Model	CC220
Capacity	220 lb / 100 kg
Accuracy	0.015% of reading
Resolution	±1/4 oz / ± 10 g
Weight	5.6 lb / 2.55 kg
Power	(2) 9V battery included
Readout	Imperial / Metric
Operating Temperature	-4°F to 156°F / -10°C to 50°C
Programmable	No

10 CFM Vacuum Pump

Model 15120A

- 1/2HP, 115V/60Hz, 2-stage
- 1/4" and 1/2" MFL intake fitting
- Factory rating: 20 microns
- Oil Capacity: 16.5 oz. (488 ml).

8 CFM Vacuum Pump

Model 15800

Choose the 15800 vacuum pump for economy and performance.

- 1 HP thermally protected motor
- Ultimate vacuum rating - 40 microns
- Easy-to-read sight glass
- Ergonomic handle grip with closed handle for balance and portability.

6 CFM Vacuum Pump

Model 15600

- 2-stage
- 1/4" and 1/2" MFL intake fitting
- "No-hassle" over-the-counter replacement warranty.

VacuMaster 5 CFM Vacuum Pump

Model 15500

- 115 volt, 2-stage design
- 1/2" ACME and 1/4" MFL intake fitting
- "No-hassle" over-the-counter replacement warranty.



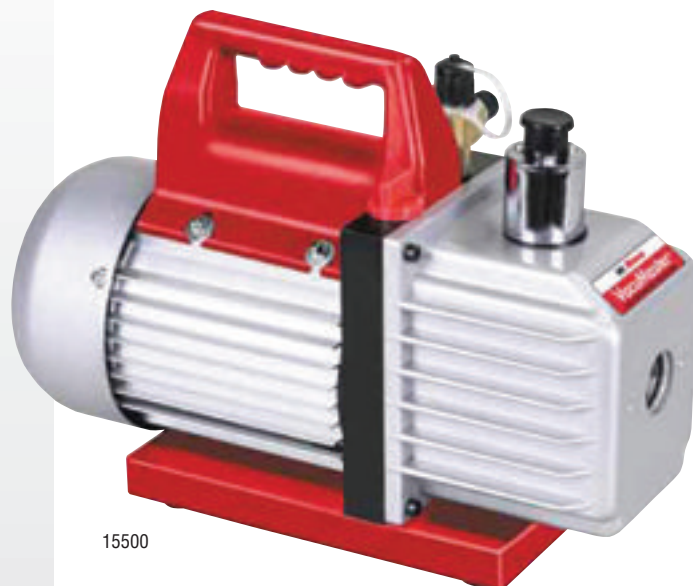
15120A



15800



15600



15500



15434

4 CFM Vacuum Pumps

Models 15434 / 15400

- 2-stage design
- 1/2" ACME and 1/4" MFL intake fitting
- Over-the-counter replacement warranty.

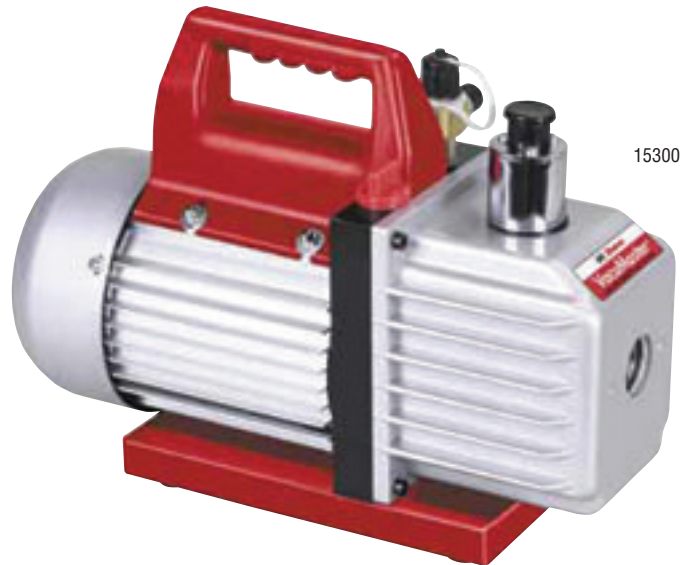
VacuMaster 3 CFM Vacuum Pump

Model 15300

- 115V, 2-stage design
- 1/2" ACME and 1/4" MFL intake fitting
- "No-hassle" over-the-counter replacement warranty.



15400



15300



Dual Stage Pump

Model VP6D

- Dual voltage design vacuum pump operations on 115 VAC or 230 VAC (50 or 60Hz)
- Advanced two-stage design pulls deep vacuum fast to 15 microns.

Specifications

Model	VP6D
Free Air Displacement	6.25 CFM @ 60Hz 148 l/m @ 50Hz
Horse Power RPM (50/60Hz)	1/2 HP 2880/3440
Ultimate Vacuum	15 microns
Intake Ports (male flare)	1/4", 3/8" SAE Male & 1/2" ACME Male
Oil Capacity	15 oz./450 ml